

The Situation Report

MONSOON RAIN 2020





5
Districts



19
Tehsils



90
Union Councils



177,869
Households affected



1,072,712
Population Affected



28,917

17,279 Houses Fully Demolish and **11,638** partially Damaged



100%

Chilli, Cotton, Tomato, Onion and Rice crops are damaged.



1,085

953 Goats, 13 Sheeps, 19 Buffalos, 6 Donkeys and 13 Cows death



4

4 dead and 1,469 Injured people



40,465

Households Migration

Immediate Relief & Rehabilitation

Tents/Shelter with Food items (Ration/Drinking Water)

Medicine/Medical treatment Camps for Humans

Animal vaccination, Fodder for Livestock

Rehabilitation
1- Compensation for houses
2- compensation for crops

Rehabilitation
3- Support for Income Generating activities

INITIAL RAPID ASSESMENT RESULTS

Conducted by SRSO MER team

	Tehsil	Ucs Affected 100%	# Of RVs 100% Affected	# of settlements affected 100%	HHs Affected 100%	Population
Total	19	90	479	3,731	177,869	1,072,712
Badin	2	8	44	332	19,037	72,435
Thatta	4	6	24	146	7,409	46,442
Umerkot	4	19	99	1,103	31,548	198,623
Sanghar	6	40	170	1,303	80,015	504,095
Mirpurkhas	3	17	142	847	39,860	251,118

Houses Damages			
	# of Houses Damages	Fully Demolish	Partial Damage
Total	28,917	17,279	11,638
Badin	4,072	3,040	1,032
Thatta	455	26	429
Umerkot	10,462	5,943	4,519
Sanghar	11,995	6,975	5,020
Mirpurkhas	1,933	1,295	638

Agriculture Crop Damages						
	Cotton	Rice	Chilli	Onion	Sugarcane	Tomato
Total	100	100	100	100	100	25
Badin	100%	100%	100%	0%	0%	25%
Thatta	100%	100%	100%	0%	0%	0%
Umerkot	100%	100%	100%	0%	0%	0%
Sanghar	100%	100%	100%	0%	0%	0%
Mirpurkhas	100%	100%	45%	100%	100%	0%

Livestock Damages							
	# Sheeps Death	# Goats Death	# Camels Death	# Buffalo Death	# Donkey Death	# Chicken Death	# Cow Death
Total	13	953	-	19	6	81	13
Badin	-	248	-	2	2	5	-
Thatta	13	26	-	7	1	21	12
Umerkot	-	160	-	1	1	1	-
Sanghar	-	495	-	-	-	6	-
Mirpurkhas	-	24	-	9	2	48	1

	Enterprise		Food Items			Non-Food Items		
	Shop	Donkey Cart	Ration	Wheat Stock	Flour	Money	Kitchen Pot	Jewlery
Total	21	5	32,585	7,905	18,895	4	679	-
Badin	-	-	7,598	3,248	4,723	-	89	-
Thatta	3	-	323	270	555	3	155	-
Umerkot	1	1	2,459	968	1,570	-	16	-
Sanghar	1	-	2,577	2,441	5,589	-	50	-
Mirpurkhas	16	4	19,628	978	6,458	1	369	-

	Human Losses					Migration
	# Children	# Women	# Senior Citizen	# Men	Injured	From settlement
Total	3	-	-	1	1,469	40,465
Badin	2	-	-	-	-	14,550
Thatta	-	-	-	-	796	486
Umerkot	1	-	-	1	435	11,934
Sanghar	-	-	-	-	191	2,731
Mirpurkhas	-	-	-	-	47	9,964

The Situation

During the current monsoon, Sindh faced seven spells of moderate to heavy rains. These heavy rains affected several districts of Sindh out of which 20 Districts- are announced as "Calamity affected areas". In pertinent to this, the updated assessment data shows that major damage has been caused by heavy rains and the precautionary steps have been taken by the relevant departments to mitigate further destruction in these areas.

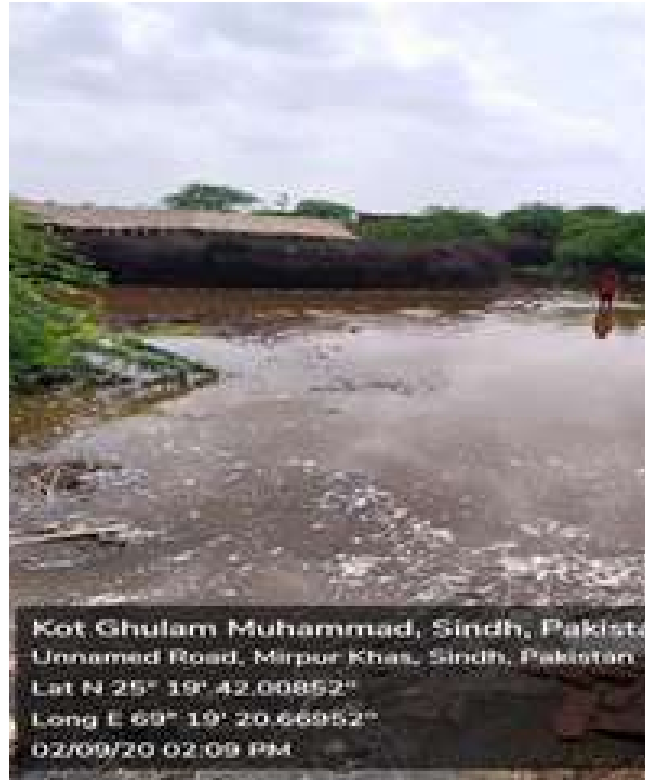
The monsoon rains and subsequent flooding in different parts of Sindh have wreaked havoc with a total number of 4 deaths and 1,469 injuries across five districts of the Peoples' Poverty Reduction Program funded by the Government of Sindh. Monsoon rainfalls which began from 25th of August damaged 177,869 households, 28,917 houses have been demolished, 4 Human losses, 100% crop destroyed in mentioned UCs, livestock: 1,085 out of which 953 Goats, 6 Donkeys, and 19 Buffalo death with 40,465 Households migration in these districts.

Immediate Relief and Rehabilitation

The Rapid assessment is prepared by SRSO MER with help of Social Mobilization Team, LSO leaders and VO Leaders. These are so far reported figures. We will update on regular basis. The families affected are mostly migrated to either higher places or towards relatives: i.e. From Thatta to Kohistan, from Mirprukhas and Umerkot Tharparker along with their animals.

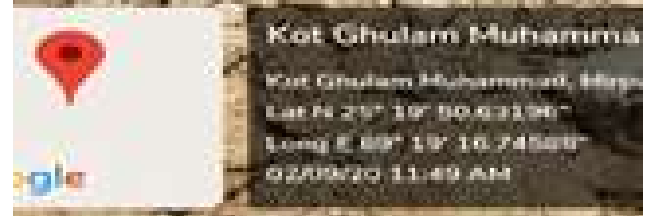
Immediate needs of the community:

- 1- Tents/Shelter with Food items (Ration/Drinking Water).
 - 2- Medicine/Medical treatment Camps for Humans
 - 3- Animal vaccination, Fodder for Livestock
- For Rehabilitation
- 1- compensation for houses
 - 2- compensation for crops
 - 3- support for Income Generating activities



Kot Ghulam Muhammad, Sindh, Pakistan
 Unnamed Road, Mirpur Khas, Sindh, Pakistan
 Lat N 25° 19' 42.00852"
 Long E 69° 19' 20.66852"
 02/09/20 02:09 PM

Humanity is above all..!!



SRSO Relief Operation

District	Stitched Clothes	Ration Bags	Drinking Water/Food Items	Shelter
Umerkot	1000	200	150	5
Sanghar	300	200	150	0
Mirpurkhas	1000	100	150	0
Total	2300	500	450	5

SRSO RELIEF OPERATION



In connection to the relief work, the SRSO Mirpurkhas and Umerkot Team under the chair of CEO SRSO started relief work in terms of: Ration bags, stitched clothes. In District Sanghar CEO SRSO distributed 100 ration bags among rain affected households located between Grid Station Samaro road to Samaro on road side.

In addition, following villages households have been already assessed and now they got ration bags for one week.

Village Zahoor Bhurgari	25 HHs
Village zulfqar shah	07 HHs
Village Dr Chetan	07 HHs
Village Nathoram	29 HHs
Village Akhtar KK	10 HHs
Gudam colony	05 HHs
Factory Paro	09 HHs
Ali Kapri	08 HHs

Total 100 Bags.



DAY HIGHLIGHTS



Shaheed Fazal Rahu, Sindh, Pakistan

Badin, Quinjal Rd, Badin, Sindh, Pakistan

District Badin

9 Long 68.4072991



161° S

WARNINGS-BREACHING AND OVERFLOW OF RIVERS/NULLAHS

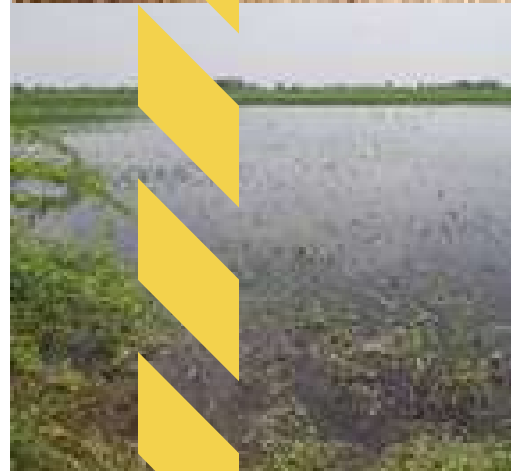
Ameer Shah drainage canal (Simnalo):

The capacity of Ameer Shah drainage is 4000 sq, but recently 9000 sq water is flowing. It approaches at peak to tolerate and could over flow if more water will be forced. Community around Ameer shah feel fear the over flow of water.

In case Ameer Shah drainage will over flow then it could severely damage and submerge remaining villages of Union councils Tarai and Fatahabad that are **26. 51 villages have been drown and migration population is round about 1500.**

Drainage canal (Simnalo)

The drainage canal situated at union council Dadarko at Tehail Shaheed Fazul Rahu which got cracked and overflow of water disseminated that submerged main road of union council dadarko. The machinery found engaged to stop and get control on flow of water, but flow of water level raised so car could not approach at dadarko union councils insides. The submerged of road and school could reflect the drainage canal water almost submerged maximum of space Agriculture. People brought their livestock at road and found some houses completely demolished on way of dadarko entrance.



DAY HIGHLIGHTS



Shaheed Fazal Rahu, Sindh, Pakistan

Sindh, Pakistan

Long 68.378454



143° SE

District Badin

WARNING

Karo bhingro Drainage Canal (Simnalo) and L4 small canal:

This drainage canal is at border of District Badin and Sujawal which through water into sea. The capacity of this canal is 4000sq, but recent status of existing water is 7000sq which makes it more sensitive. There are so many small drainage canal to touch karo bhungro for throwing water, but current overflow of water reverse water from those small canal that caused the submersion of agriculture land and villages. Small canal L4 at Khorwah inside get reverse water from karo bhungro that caused the damage of L4 canal which flow water in agriculture land and villages. It severely harmed the 02 union councils i.e. Khorwah chowk and khorwah. Team is working to stop damage of L4 canal border but yet did not get any success. Its rest sure that L4 could be more damage from different location which could not be control while level of water could be decrease. Karo bhungro seems sensitive because of exceeded limit of water that could harm if it will get any damage then more union councils could be exacerbated i.e. khorwah, khorwah chowk, Shaheed fazul Rahu, Shaheed fazul rahu city and Ahmed Rajo could be severely damaged with submersion of water.

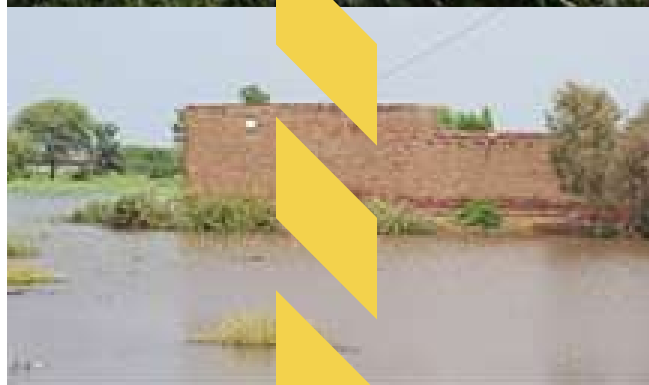
Village Khanani Jat : This village is at union council Khorwah near L4 which got affected by L4, Sher wah and monsoon rainfall. The houses in village got demolition and submerged of agriculture assets and PPHI hospital. Khanani jat specially hit by Sher wah which flow besides at some district to village khanani. Sher wah damaged due to be over flow that harms villages in nearby.



Shaheed Fazal Rahu, Sindh, Pakistan
Canal Rd, Badin, Sindh, Pakistan

Lat 24.639958 Long 68.393334

02/09/2020 02:35:13 PM



Shaheed Fazal Rahu, Sindh, Pakistan
Canal Rd, Badin, Sindh, Pakistan

Lat 24.646064 Long 68.412476

02/09/2020 02:40:00 PM

